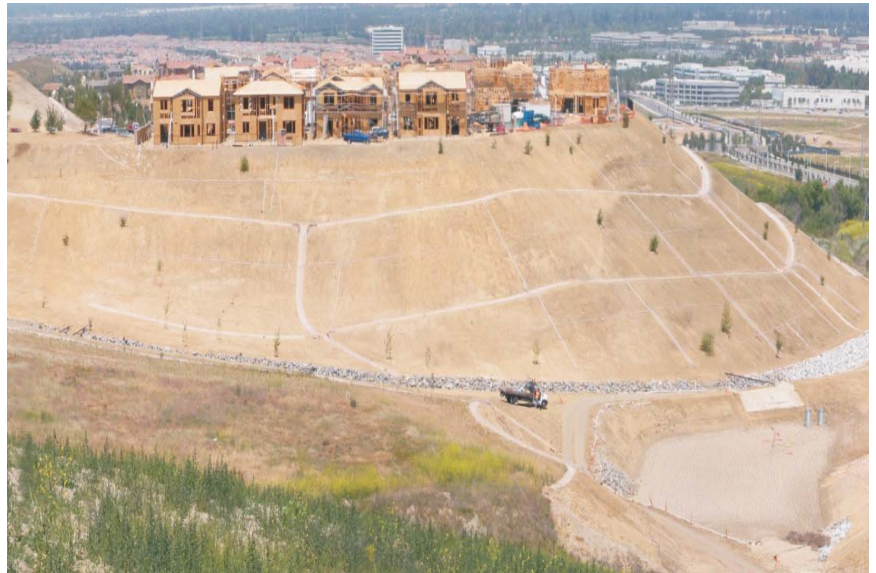


Kling Consulting Group, Inc., was established in 2010 to provide professional engineering services which include: site reconnaissance, drilling/trenching exploration operations while performing geologic logging, literature research and laboratory testing to generate a technically sound data base for subsequent geologic and/or engineering decision making.

We also provide forensic engineering assessments, consultation, and litigation support services. KCG utilizes in-house field investigation and laboratory testing facilities to develop reliable and defensible findings. Our state-of-the-art modeling and presentation capabilities facilitate clear, concise and understandable presentation of the facts.

Geologic Capabilities

- Geologic hazard assessments
- Pre-acquisition due diligence
- Construction & grading
- Fault activity investigation
- Site reconnaissance
- Landslide investigation
- Debris/mud flow potential
- Groundwater & seepage evaluation
- Subsurface exploration
- Rippability studies
- Preliminary investigation
- Geologic mapping
- Geophysical surveys
- Second & third party reviews
- Air photo interpretation
- Coastal erosion and bluff stability studies



Forensic Engineering

- Expert witness testimony
- Third party independent evaluation
- Environmental assessments
- Engineering geology
- Geotechnical engineering
- Geophysical studies
- Insurance claim evaluations
- Distress investigation



Geotechnical Engineering

- Residential
- High-rise/deep foundations
- Seismic assessments
- Earthquake engineering
- Retaining systems
- Slope stability Analysis
- Finite element Analysis
- Construction testing/observation
- Pavement design
- Liquefaction evaluation and mitigation
- Grading-hillside/flatland
- On-site sewage disposal
- Material testing
- Second & third party reviews
- Field testing (Concrete/Soils/Asphalt)
- Full service soils laboratory

CALL or EMAIL KLING CONSULTING GROUP

(949) 797-6241 Fax: (949) 797-6260

18008 Sky Park Circle, Suite 250, Irvine, CA 92614

Henry Kling, President, hkling@klingconsultinggroup.com

www.klingconsultinggroup.com